

# HIGH SPAN

- Aluminum & Stainless Steel Panel & Cladding Systems
- Sunshades
- Brise Soleil
- Rainscreens



**PHOENIX**  
ARCHITECTURAL  
GLASS + METAL

# HIGH SPAN • introduction

PHOENIX AG+M: HIGH SPAN over-sized (aluminum & stainless) panels and panel systems are designed to meet the unique conditions of each project.

Available in the industry's largest sizes (in excess of 198" in height) & distinguished by its 20-year coating warranty (Kynar® PVDF), High-Span façade systems are the ideal choice for façade cladding & solar control.

Produced from the highest-quality aluminum & stainless steel; environmentally conscious architectural metal systems with seamless design flexibility, ease of installation and low maintenance are deployed as:

- Screenwalls (perforated / laser-cut)
- Façade & Interior Cladding
- Sunshades (vertical / horizontal)
- Architectural Features
- Brise Soleil
- Awnings / Canopies
- Transit Shelters
- Column Covers

All High Span systems include shop drawings & structural calculations stamped by a licensed engineer in accordance with local and national building codes.

High Span components (panels & fittings) are also available to cladding industry suppliers & façade erectors as stand-alone fabricated materials.

## Thickness Range

1/16" to 1 1/4"

## Aluminum Alloy

AA1100, AA3003 & AA5052

## Stainless Steel

316, 316L, 304 & 2205

## Custom Metals

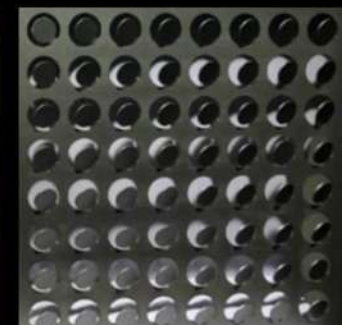
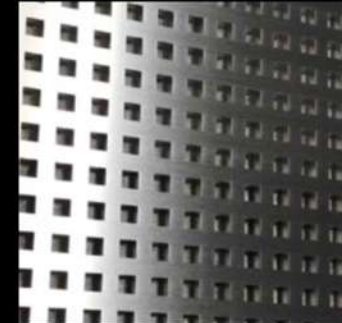
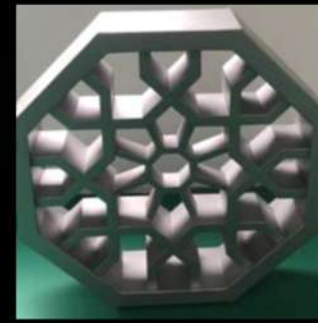
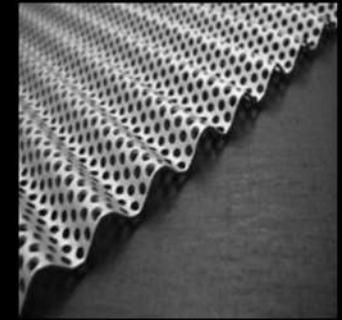
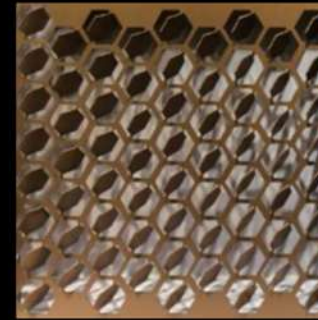
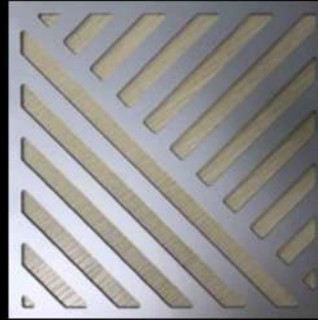
zinc, copper, brass & bronze

## Coatings & Finishes

KYNAR 70% PVDF, mica, simulated wood, terrazo, pre-cast & terracotta

## Compliance

AAMA; ASTM



- All processing & finishing is done at 1 location
- Automated production & skilled technicians ensure consistency
- Fully Automated Panel Production-Line
- CNC cutting, shearing & drilling
- High Efficiency Punching & Perforation
- CNC Laser Welding
- Fully automated Paint Line

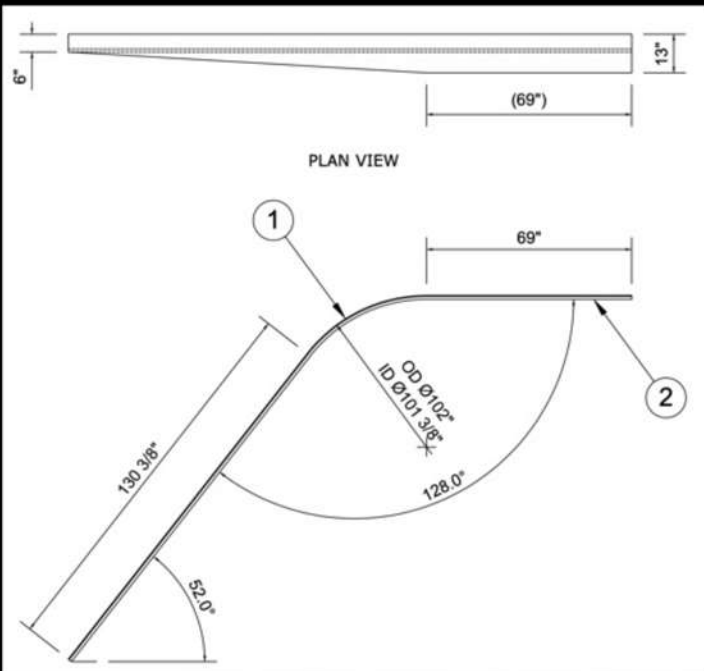
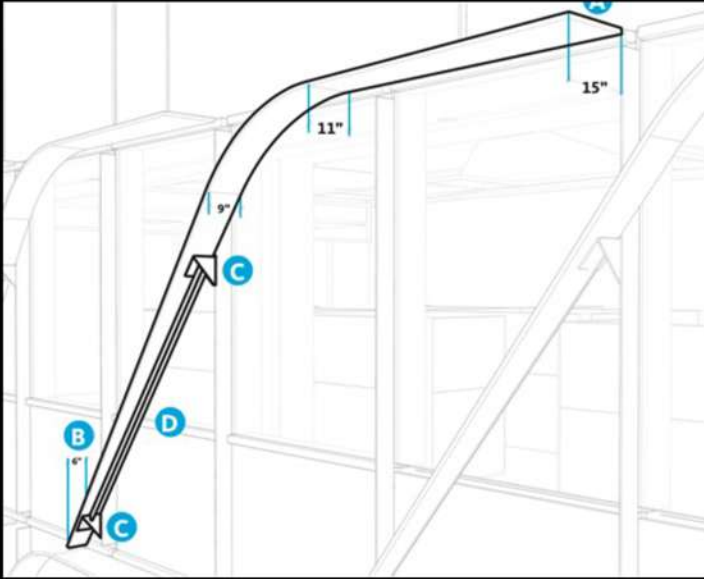
Domain 10, Austin, TX

# HIGH SPAN • quality control



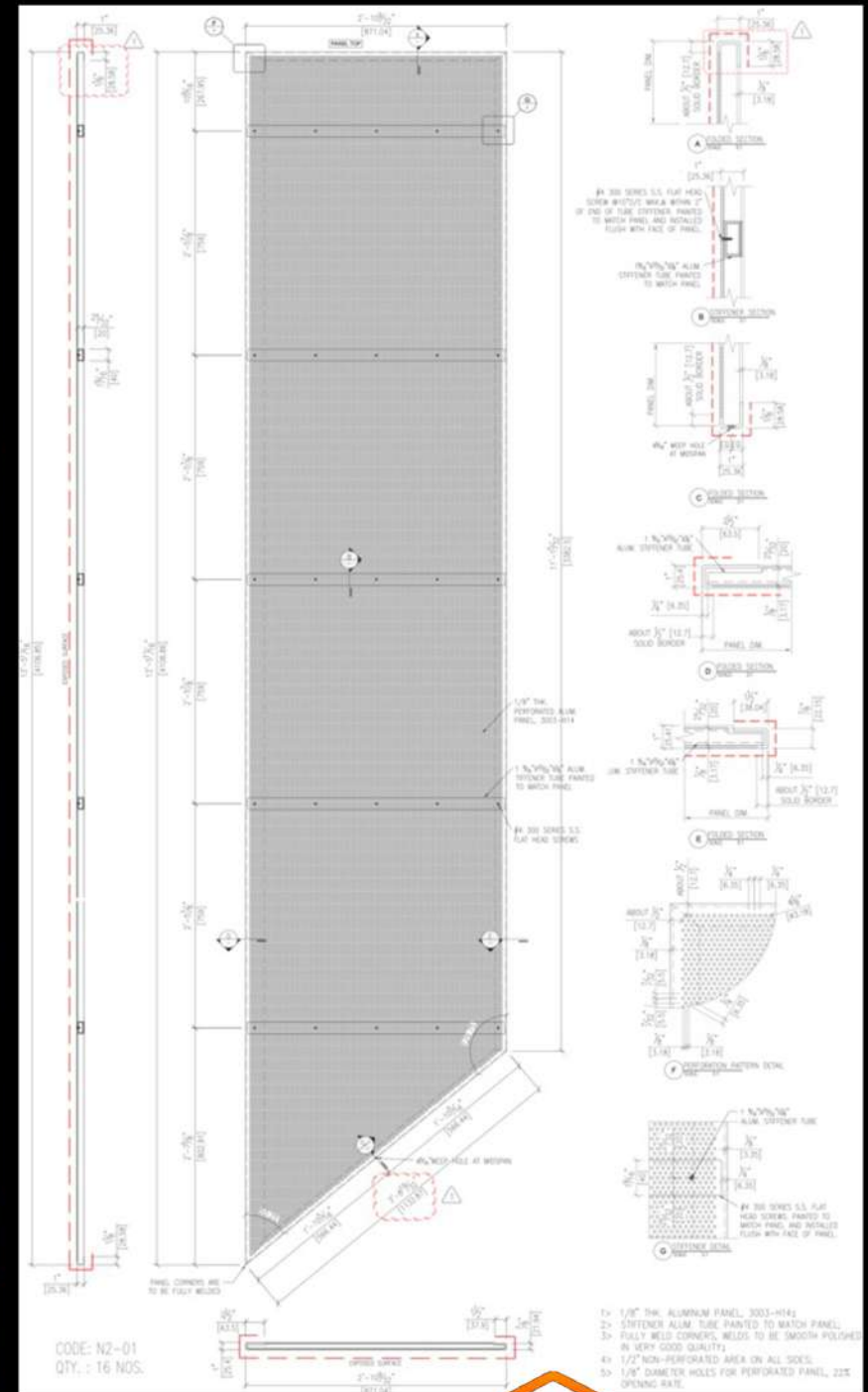
# HIGH SPAN - texas instruments - tucson, az

- Architectural shading feature
- Panel length in excess of 20'



# HIGH SPAN - block 164 - austin, tx

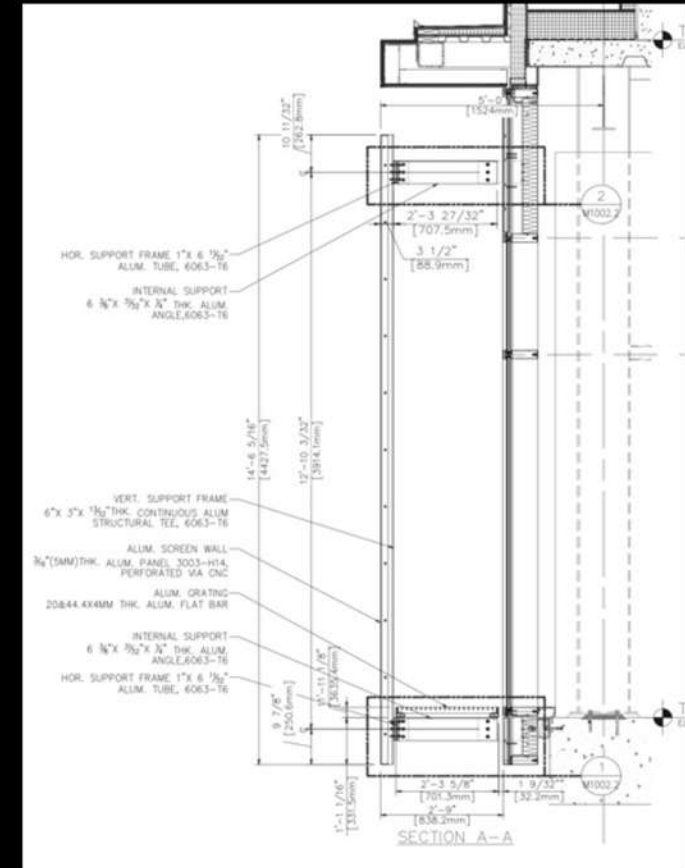
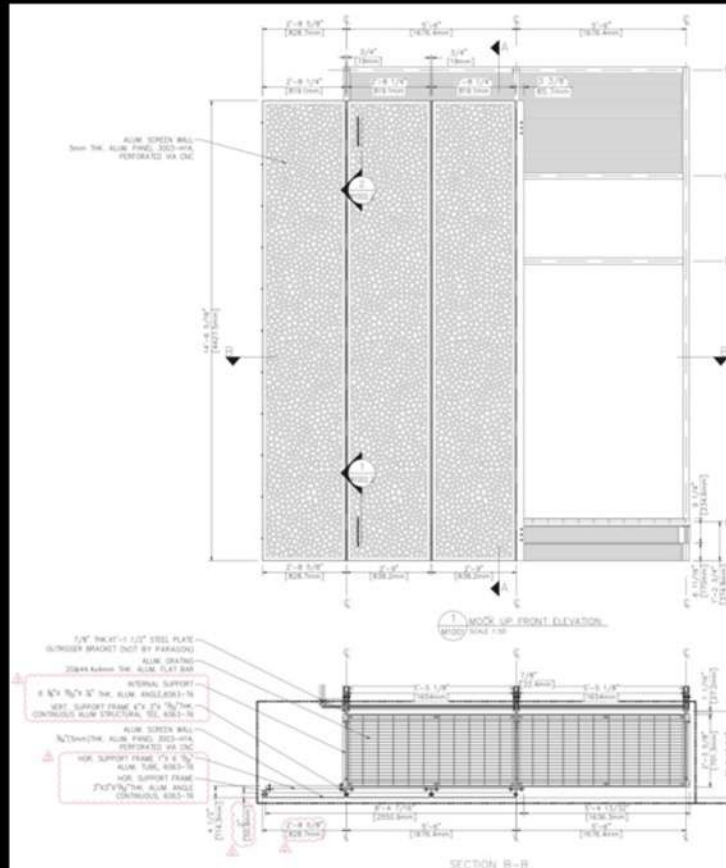
- Jumbo size panel
- Engineered stiffeners
- Micro perforation (1/8")
- Glazed in curtain wall panel



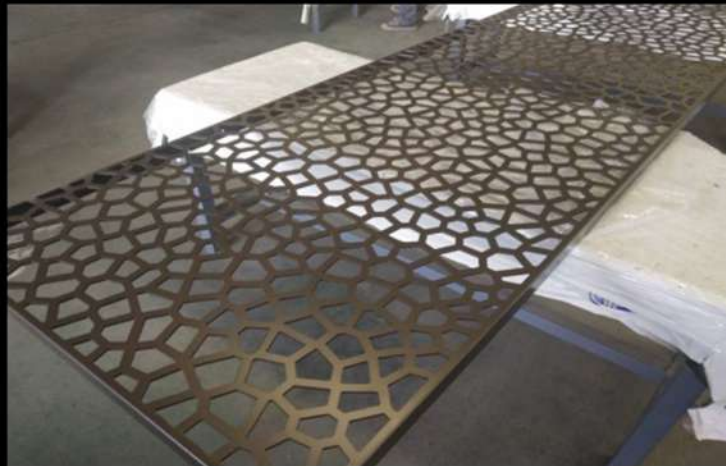
## Brise-Soleil / Sunscreen System

Integrated  
catwalk system

Collaboration  
w/ curtainwall  
supplier (Schuco)



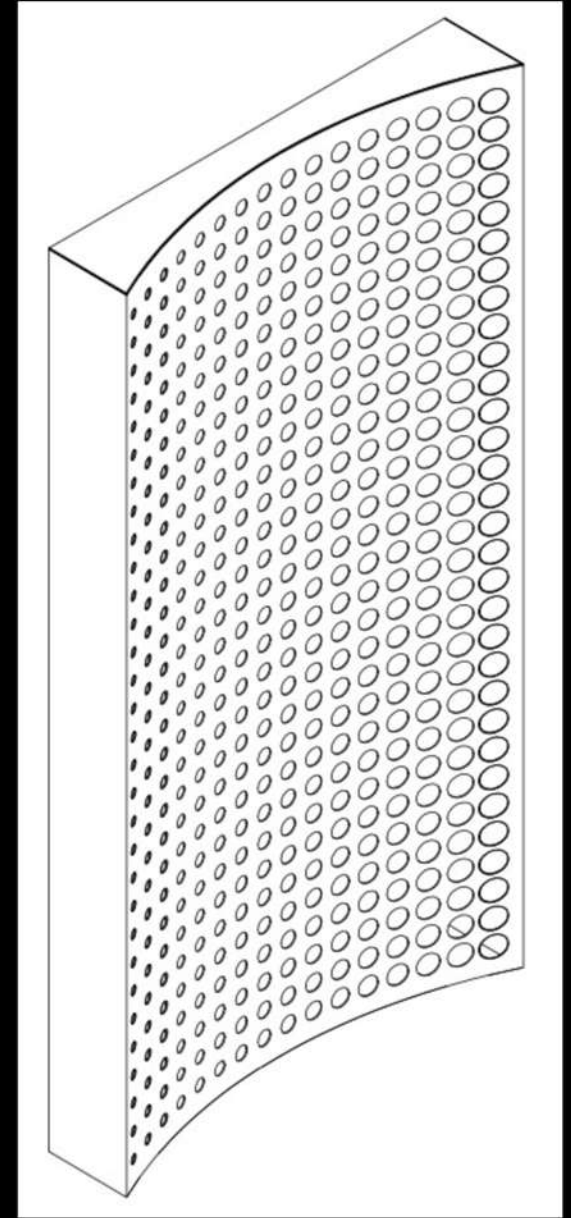
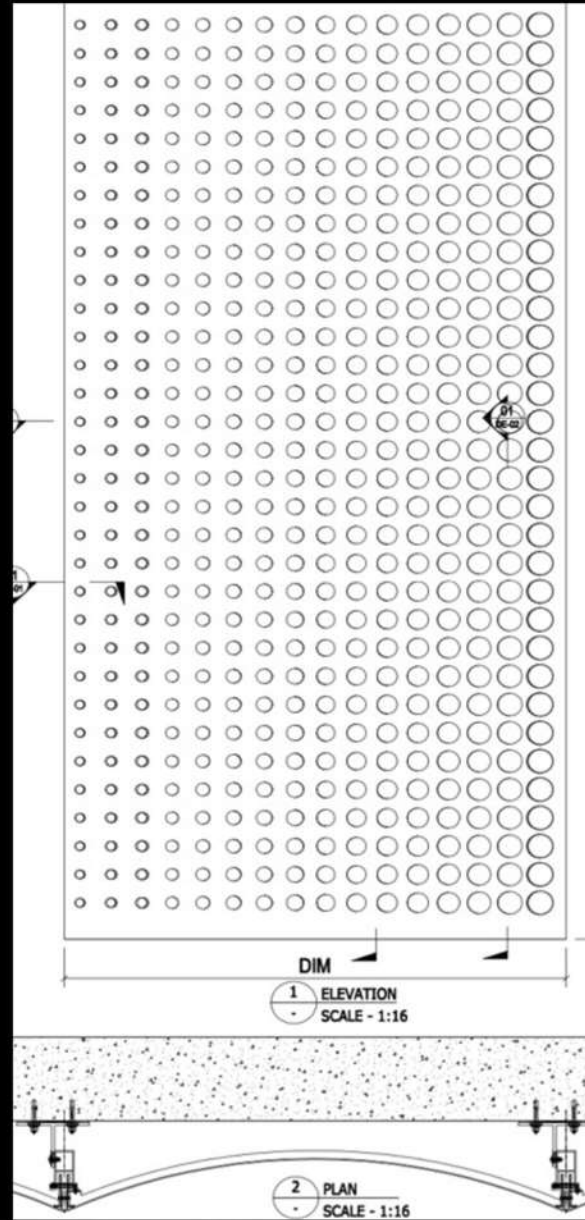
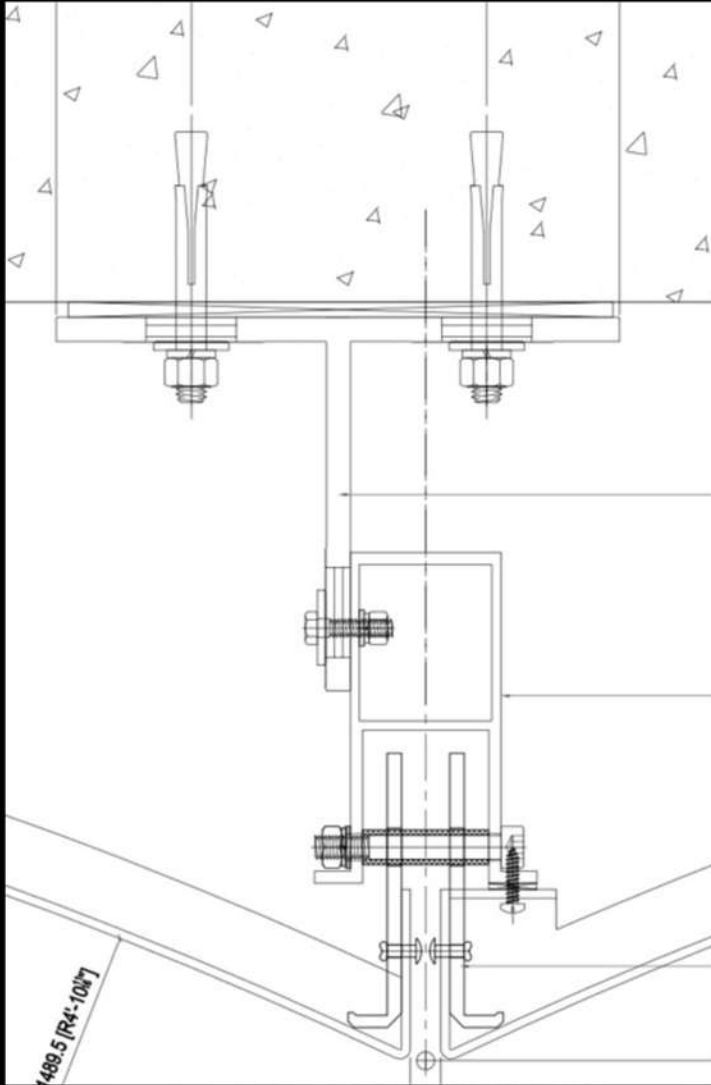
Additional Brise-Soleil  
options include;  
terracotta, natural  
stone, timber,  
extrusions & formed  
aluminum.



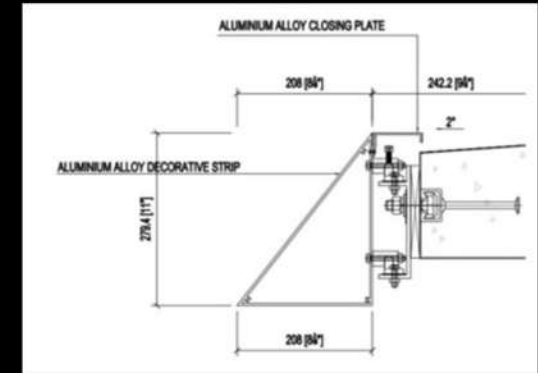
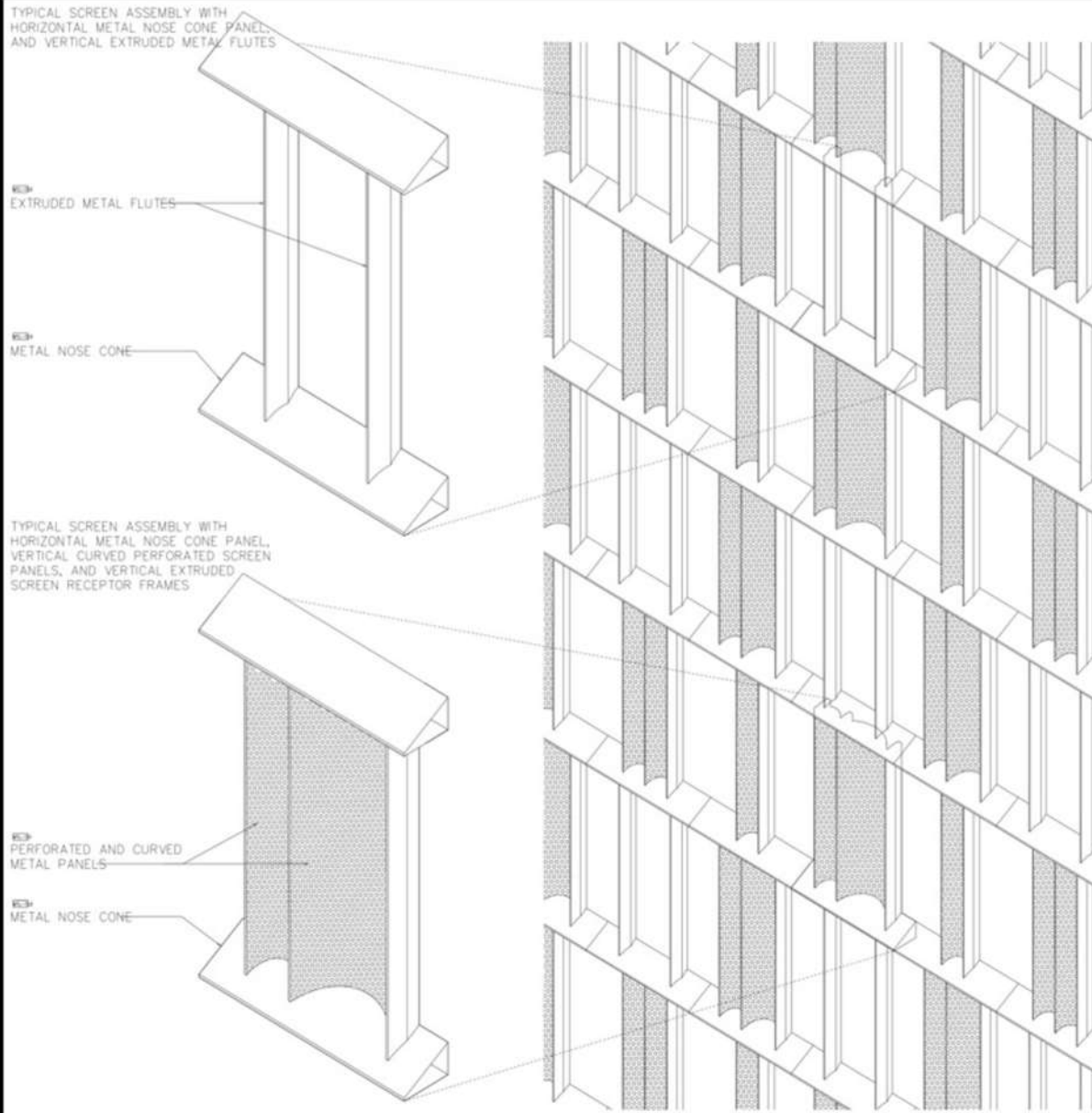


# HIGH SPAN • design concept

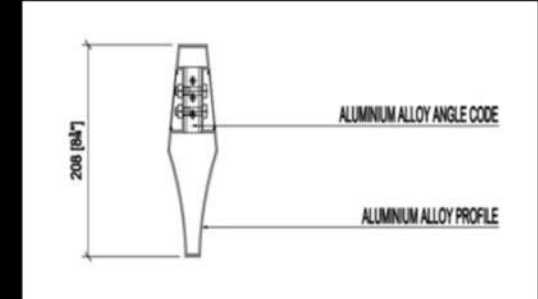
- Pin and hook system
- Minimal sight lines



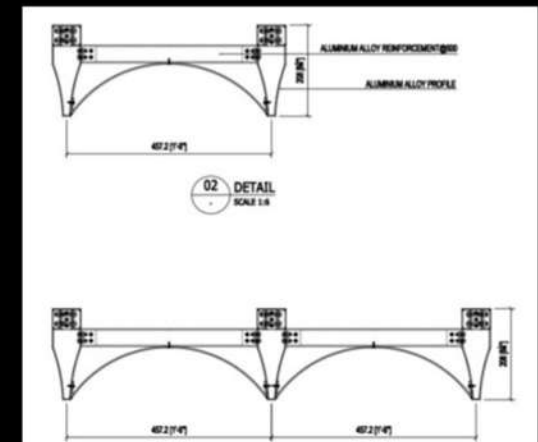
## Complete Façade Screenwall System



slab cover



vertical extrusion



various shapes/radius

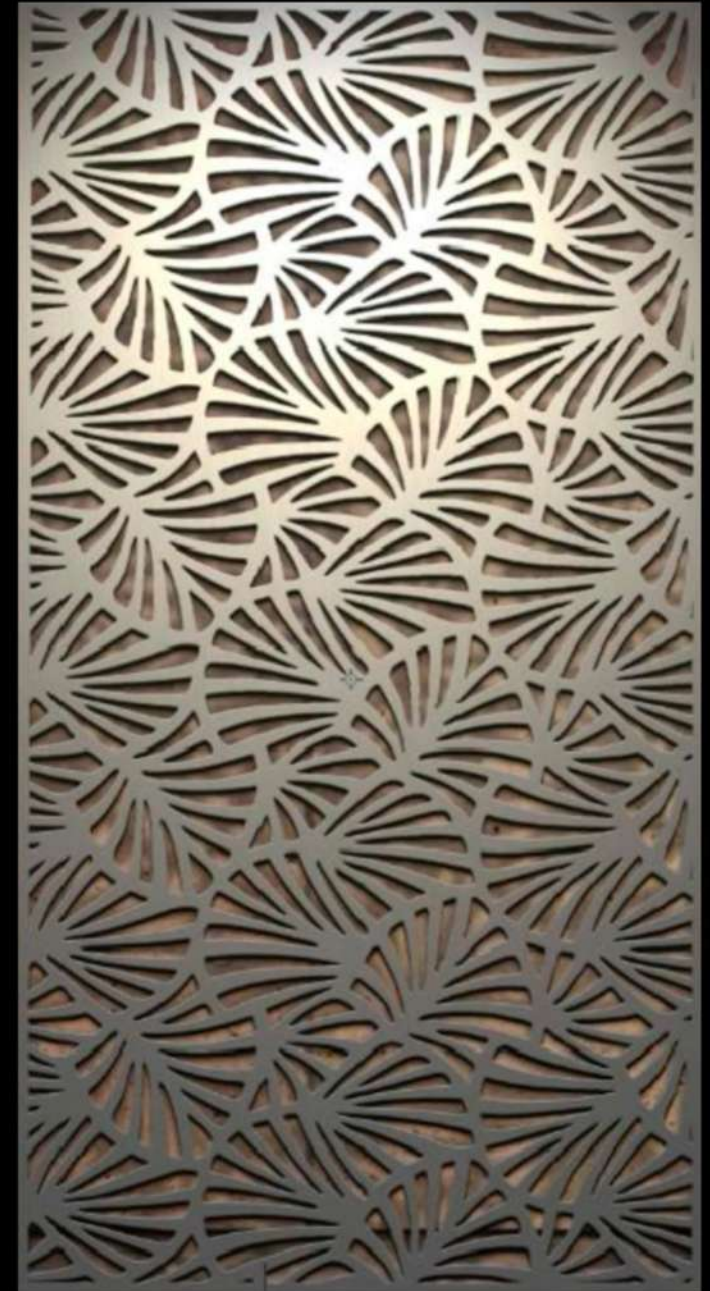
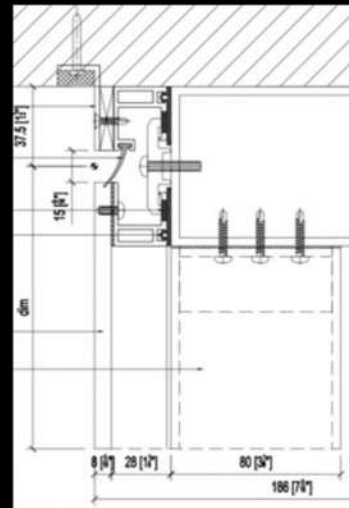
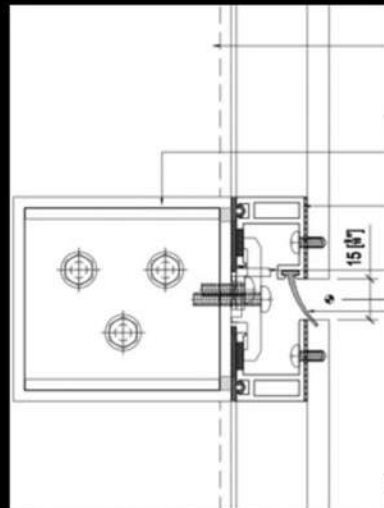
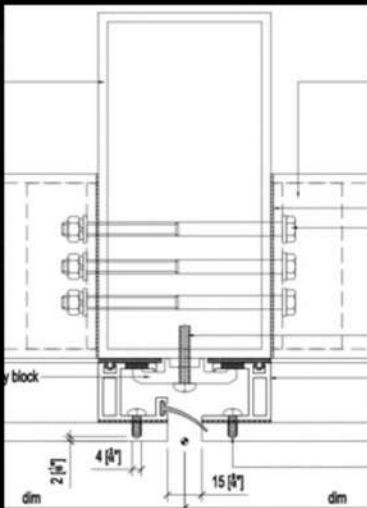


# HIGH SPAN • design concept

Toggle  
Attachment  
Framing System

Jumbo panel  
(~5' x 15')

Laser cut design



HIGH SPAN

# Thank You

## Phoenix Architectural Glass + Metal, LLC

4235 Federal Hwy.

Miami, FL 33137

Contact:

[info@phx.glass](mailto:info@phx.glass)

Ph# 305-753-47087

IN Phoenix Architectural Glass + Metal, LLC

